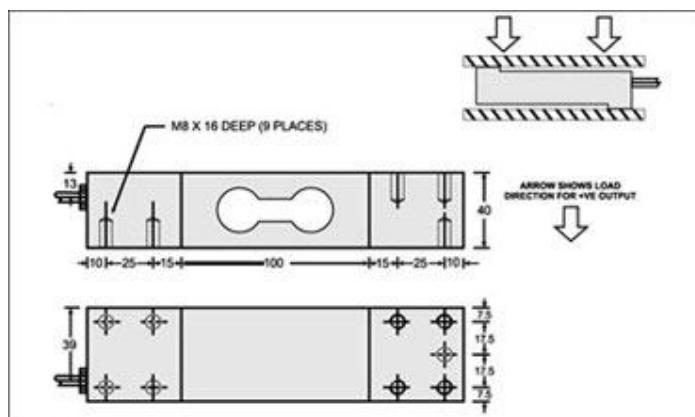




SINGLE POINT LOAD CELL

646

646 is a Strain Gage based low profile bending beam Load Cell and is ideal for precision single point platform scale applications. It is designed for eccentric load sensitivity. Its tool steel construction is very rugged to withstand shock loads. It is also provided in Hardenable Stainless Steel - 17-4 PH construction.



Dimensions: 150x40x40(mm) Thread hole: M6

Wiring Scheme

Red + (Input +) White - (Output -) Black - (Input -) Green + (Output +)

Performance Specification

Standard Capacities	200, 300, 500, 750, 1000, 1500 Kgf
Excitation Voltage	10 VDC - Maximum 15 VDC
Nominal Output	2.0 mV/ V
Non - Linearity	< $\pm 0.025\%$ FSO
Hysteresis	< $\pm 0.02\%$ FSO
Non-Repeatability	< $\pm 0.01\%$ FSO
Creep (30 minutes)	< $\pm 0.03\%$ FSO
Zero Balance	$\pm 1.0\%$ FSO
Input Resistance	400 ± 15 Ohms
Output Resistance	350 ± 5 Ohms
Insulation Resistance (50 VDC)	> 1000 Mega Ohms
Cable Length (4 Core Screened)	500 mm. Minimum
Safe Overload of Rated Capacity	150%
Ultimate Overload of Rated Capacity	200%
Temp. Compensated Range	0-60 $^{\circ}$ C
Temperature Effect on Output	< 0.0015% FSO/ $^{\circ}$ C
Temperature Effect on Zero	< 0.0020% FSO/ $^{\circ}$ C
Platform Size	750mm X 750mm
Eccentric Load Effect	< 0.02% of FSO at 1/3 rated load placed within the specified sized platter
Deflection	< 0.5 mm at FSO
Tightening Torque	1.5 m.kg.
Finish & Construction	Aluminium Alloy
Environmental Protection Class	IP65

INDUSTRIAL ENGINEERING INSTRUMENTS

Manufacturers of Techno Electronic Aids Devices, Instruments and Systems,

203, 12th Main Road, 3rd Phase, Peenya Industrial Area,

Peenya, Bangalore-560058. Karnataka, India.

Phone : 91-80-28394520 Fax : 91-80-28371386

Email: info@ieicos.com Web Site: www.ieicos.com

Due to continuous improvement, specifications, dimensions, look, color, feel and features subject to change without notice.